

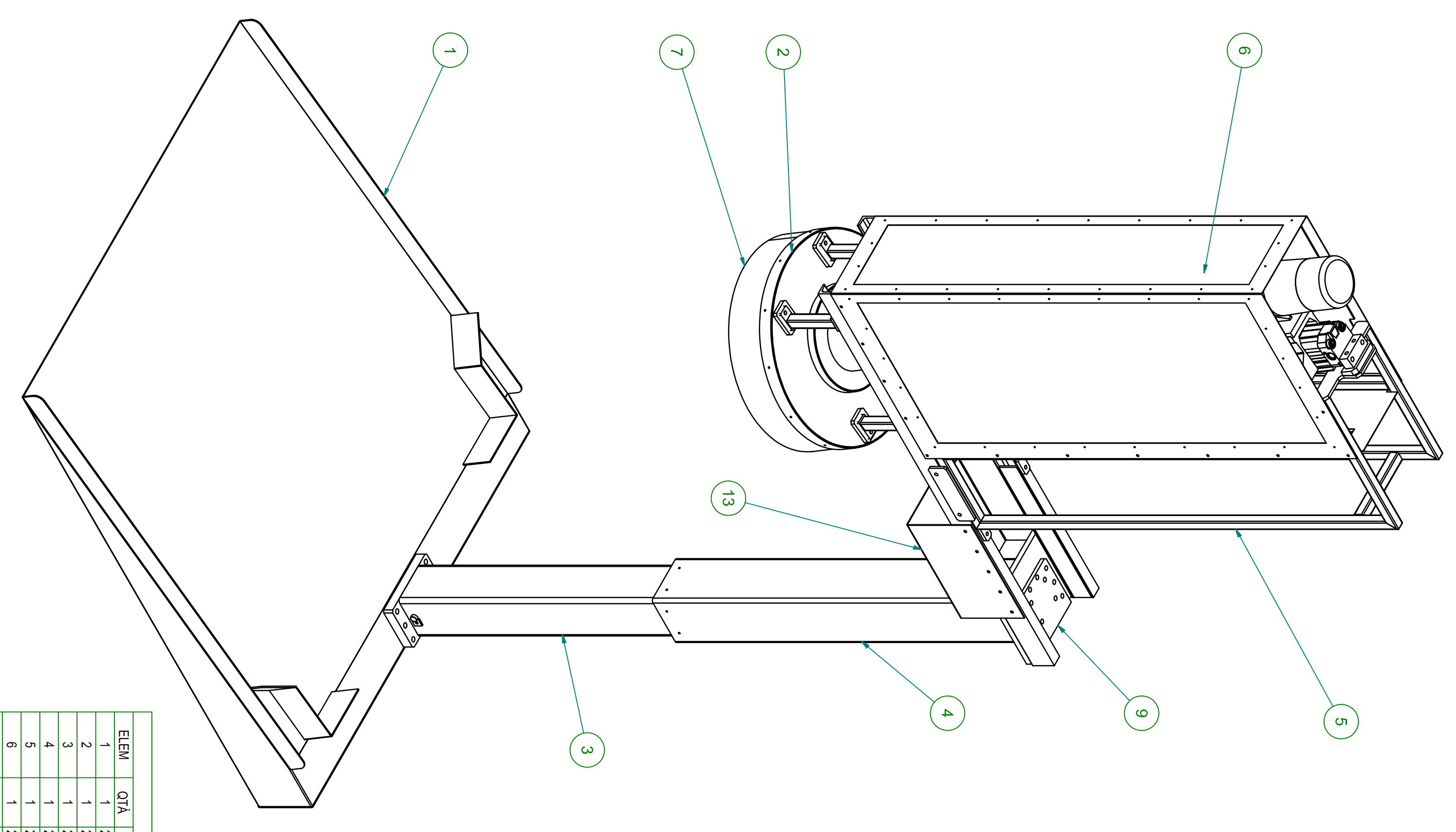
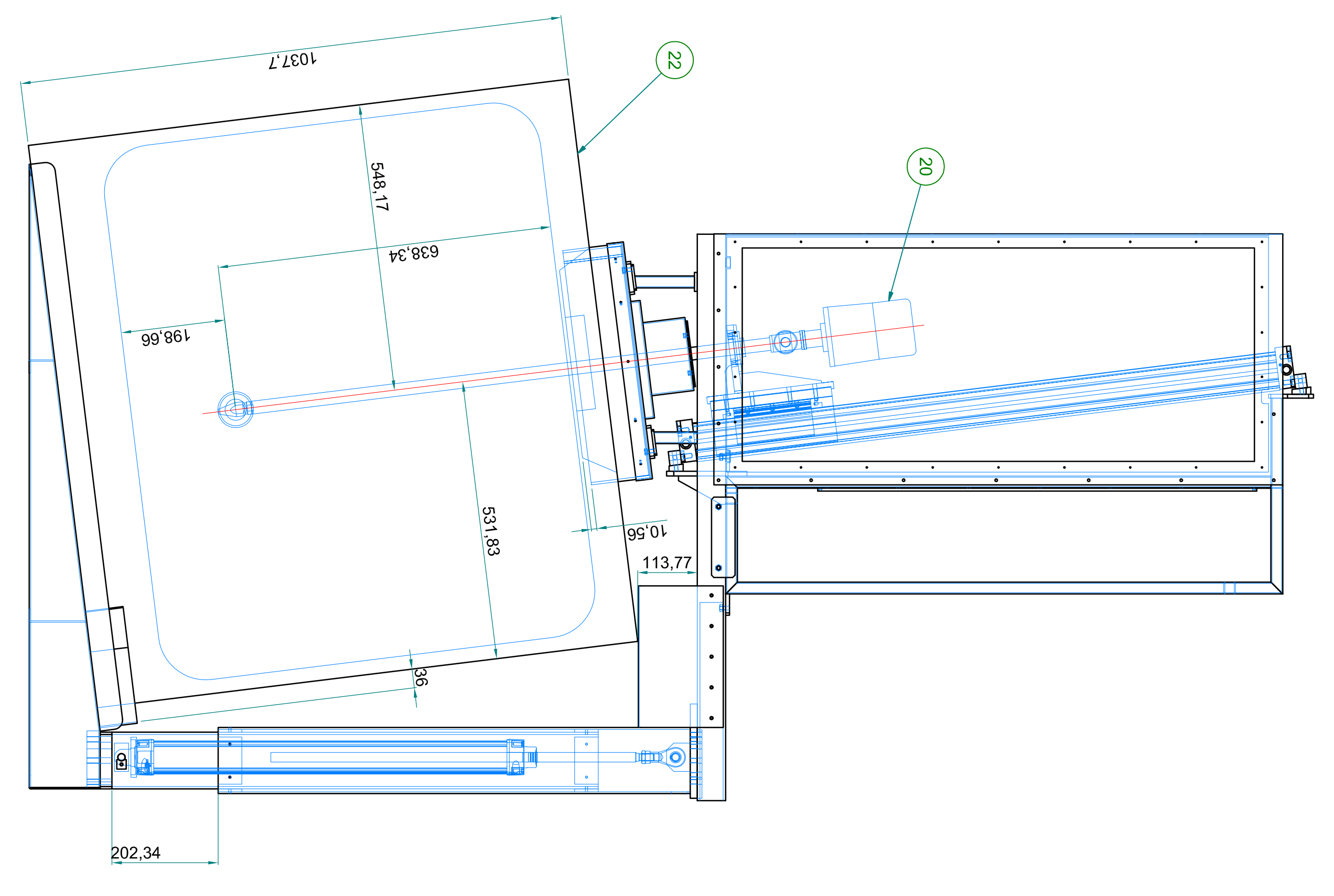
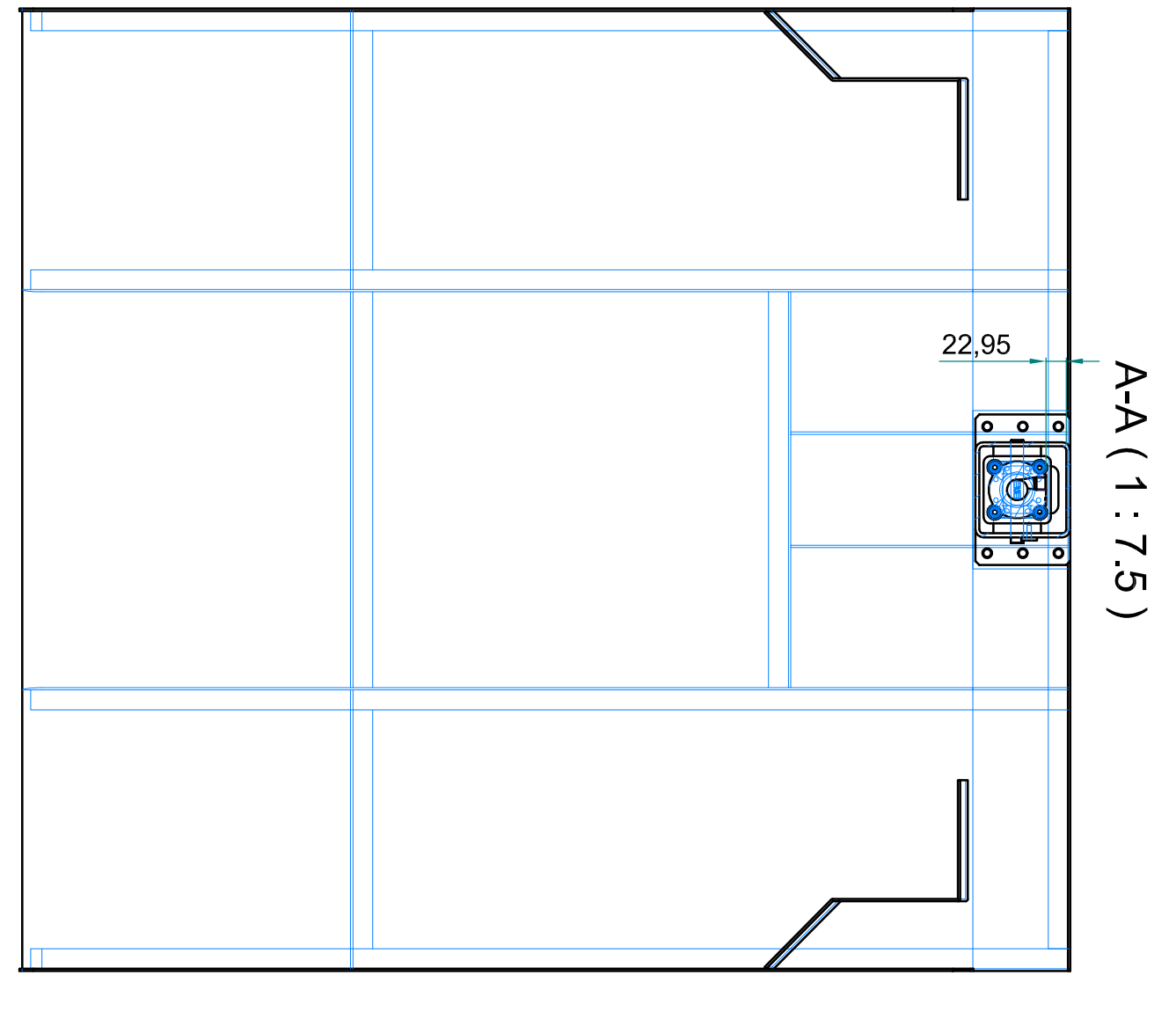
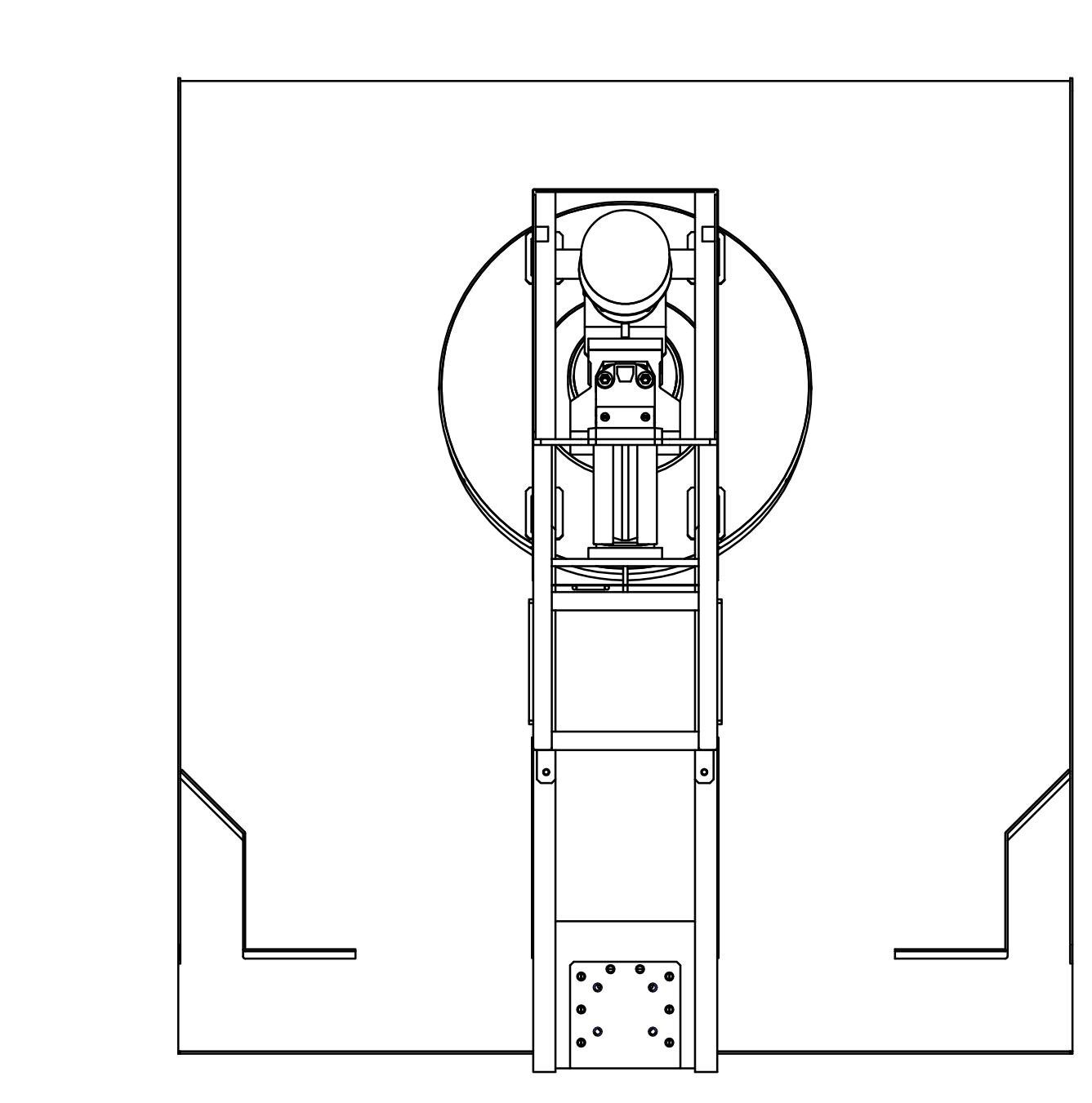
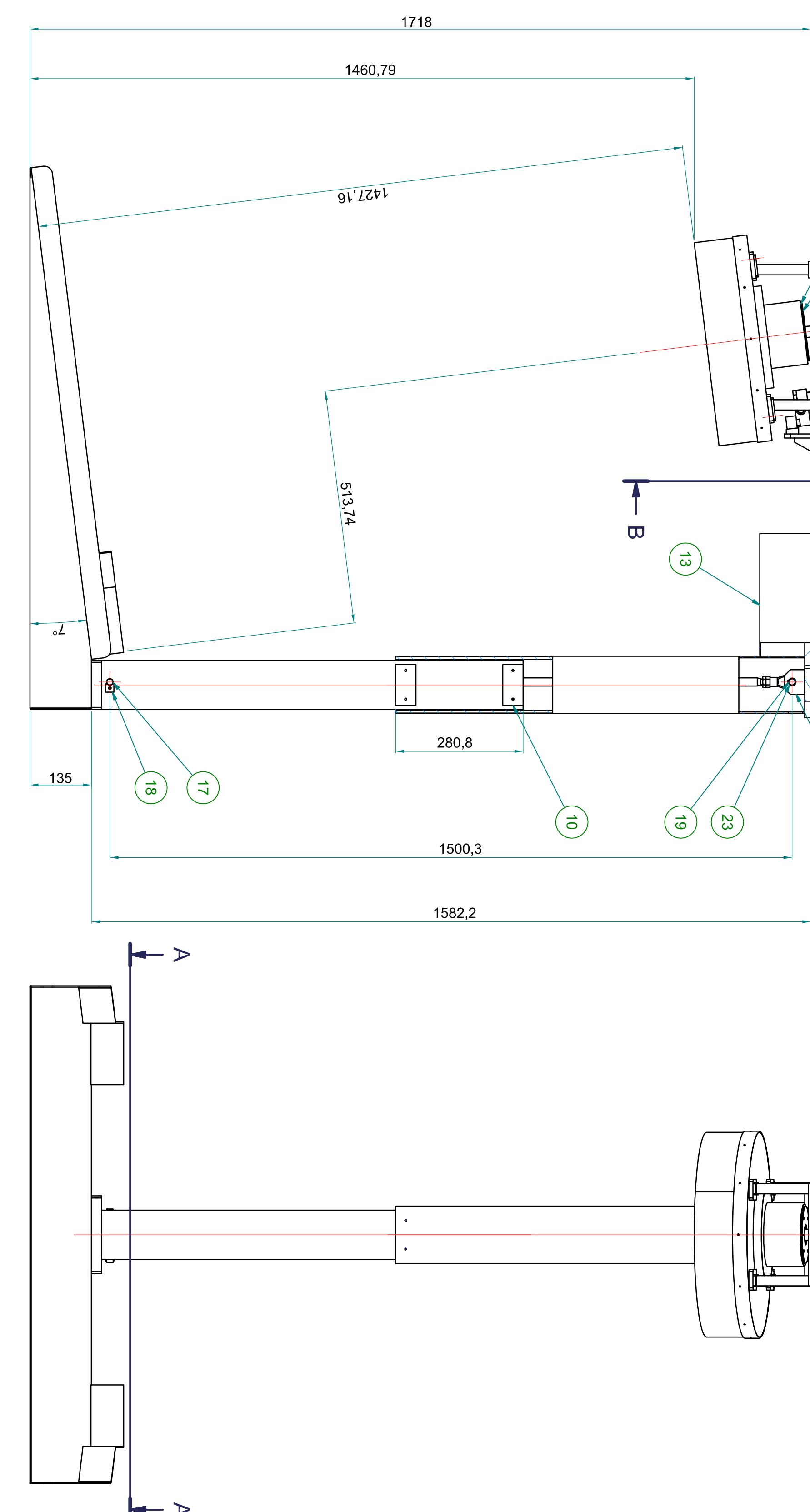
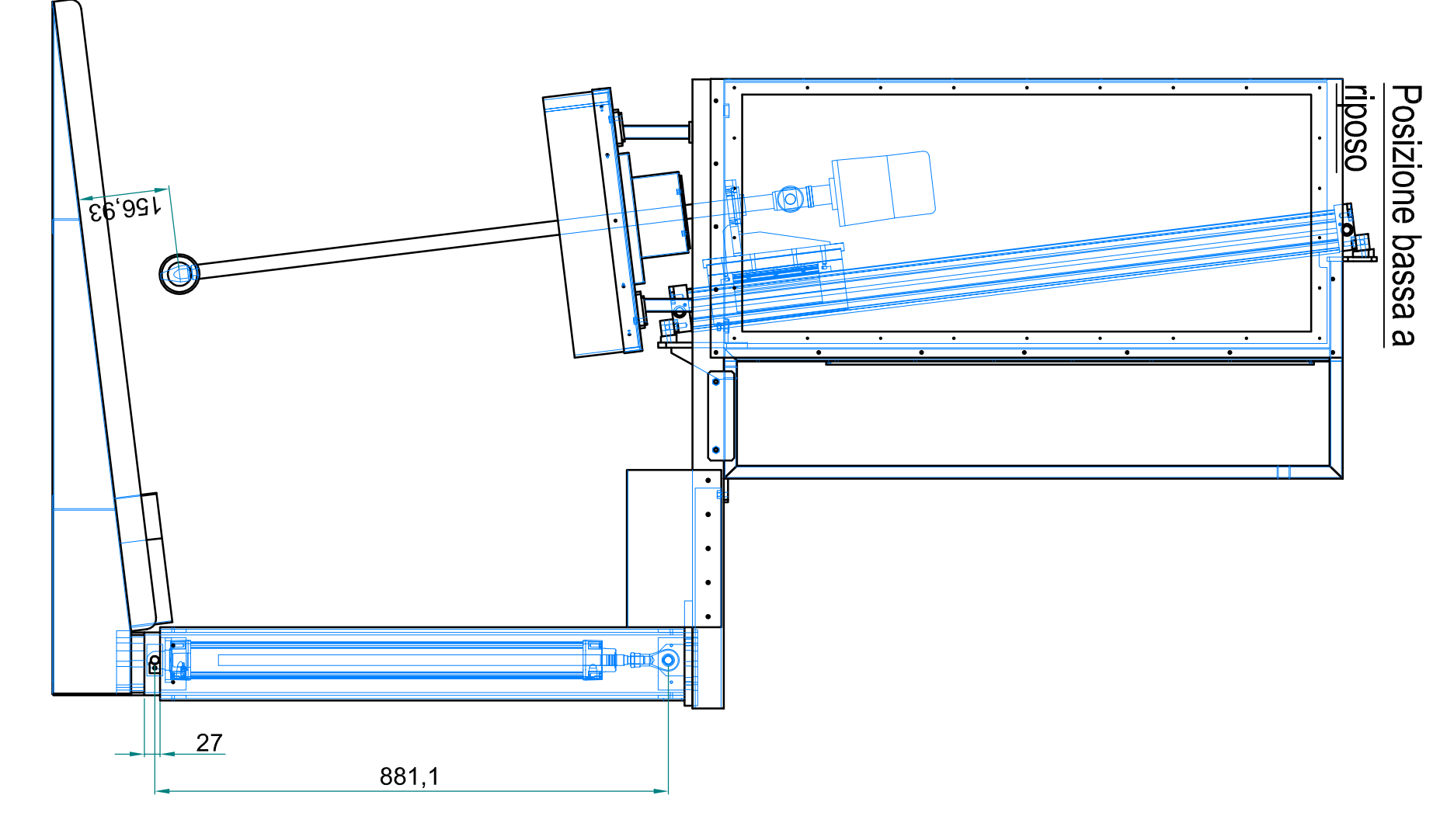
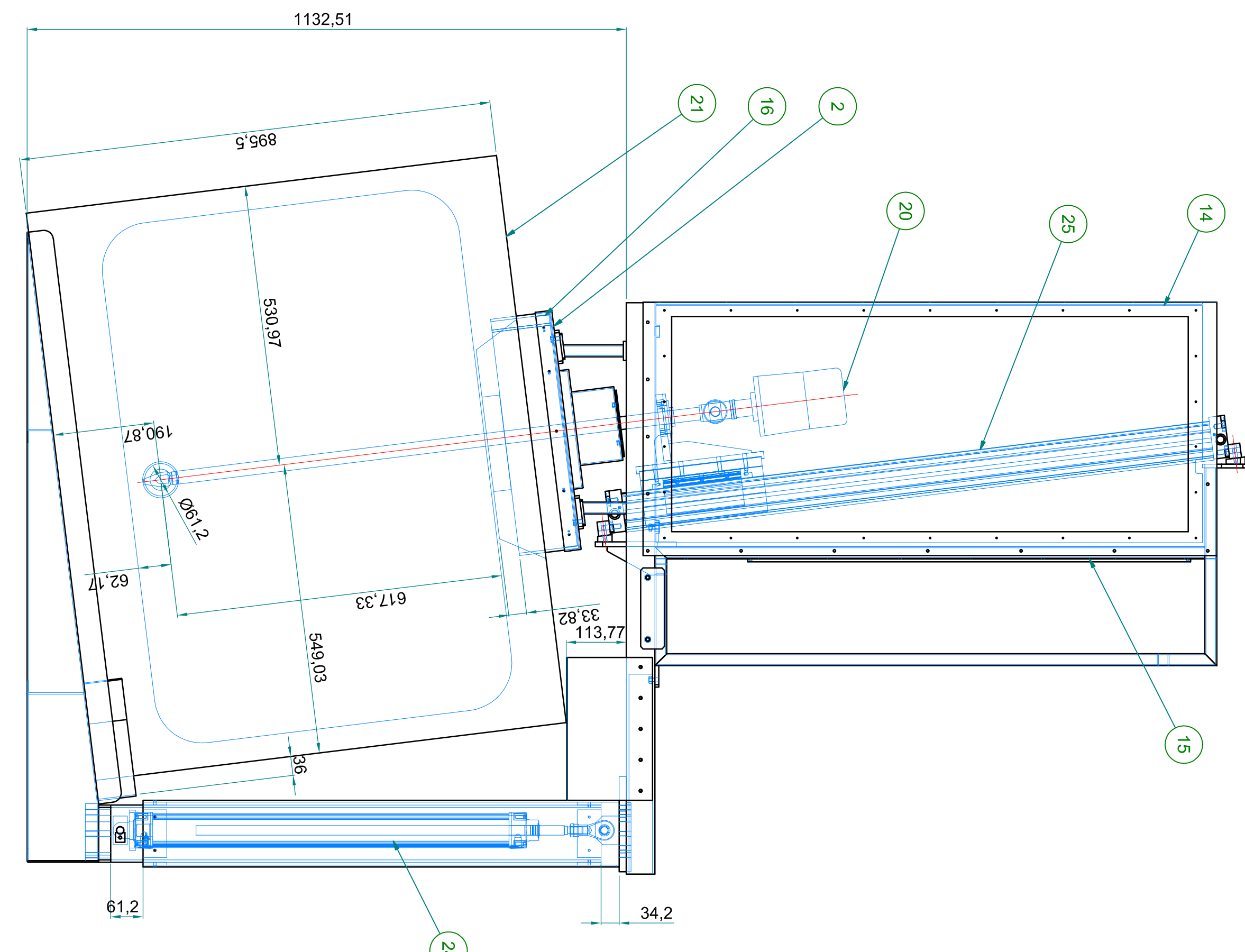
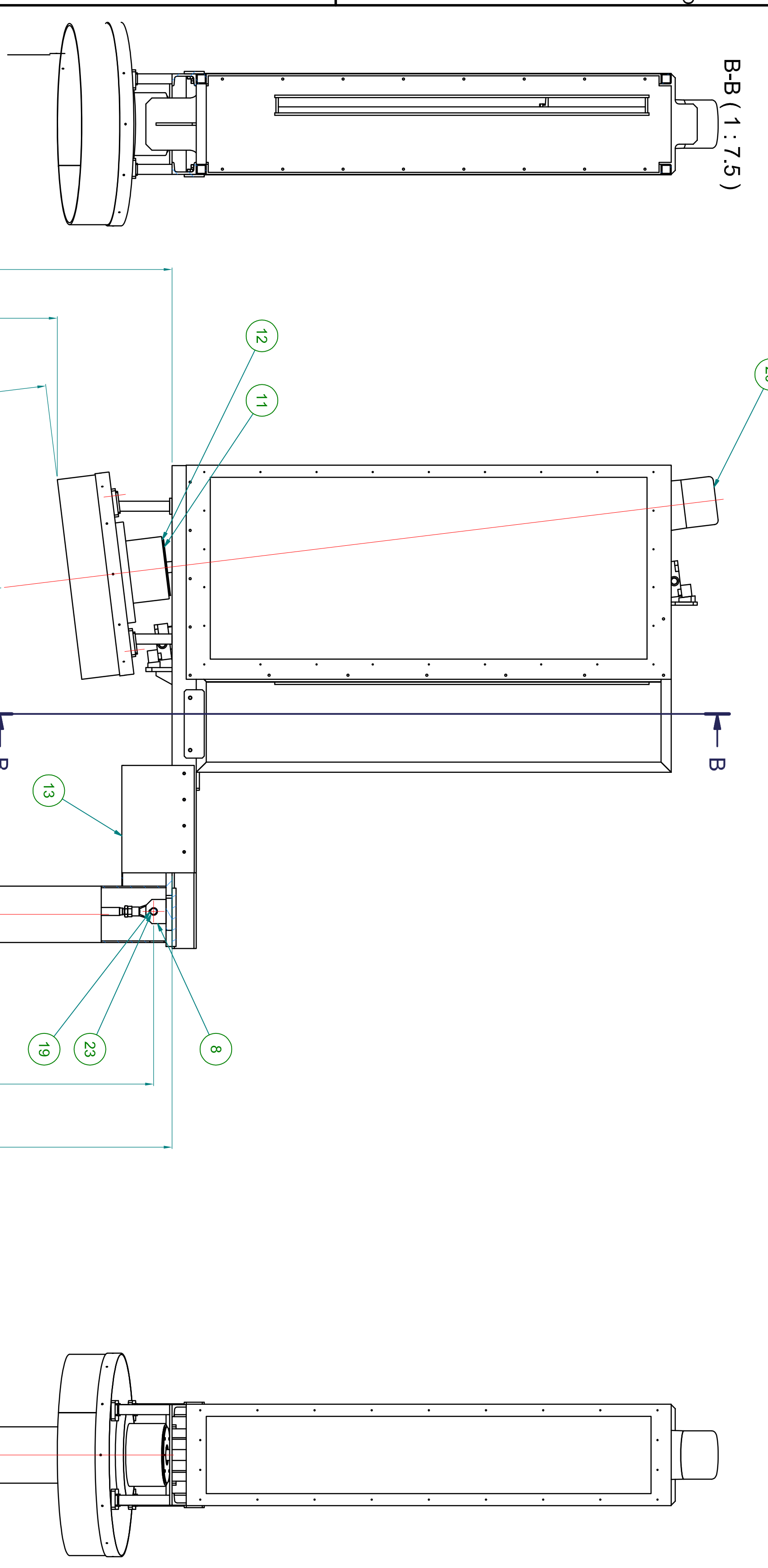


Eurovetri Fusi Srl
Sede legale: via Masini del lavoro n. 25 - Milano (MI)

Esclusivo
Verifica di Aspettabilità
Validazione Impatto Ambientale
Revisione tecnica per n. 2200/2020 del 22/09/2020
NUOVA LINEA LAVORO PRODOTTORE

Rev. CO Data 30/04/2021
Corrente
Il tecnico ambientale

04
Scale
Varie



ELEM	DTA	NUMERO PARTE	PARTICOLARE	FORNITORE
1	1	201025-00-01	Placchetta	
2	1	201025-00-02	Chiusura superiore	
3	1	201025-00-03	Chiusura inferiore	
4	1	201025-00-04	Chiusura superiore	
5	1	201025-00-05	Chiusura inferiore	
6	1	201025-00-06	Supporto	
7	1	201025-00-07	Supporto	
8	1	201025-00-08	Forcella	
9	1	201025-00-09	Forcella	
10	8	201025-00-10	Placchetta	
11	1	201025-00-11	Placchetta	
12	1	201025-00-12	Placchetta	
13	1	201025-00-13	Chiusura superiore	
14	1	201025-00-14	Chiusura inferiore	
15	1	201025-00-15	Chiusura superiore	
16	1	201025-00-16	Chiusura inferiore	
17	1	201025-00-17	Chiusura superiore	
18	1	201025-00-18	Chiusura inferiore	
19	1	201025-00-19	Placchetta	
20	1	201025-00-20	Placchetta	
21	1	201025-00-21	Placchetta	
22	1	201025-00-22	Placchetta	
23	2	201025-00-23	Placchetta	
24	1	201025-00-24	Placchetta	
25	1	201025-00-25	Placchetta	